

THE APPLICATION FOR EPS

The application for EPS is available at:
www.mobility.p.lodz.pl/in

In case of any questions please contact us:
Lodz University of Technology
International Faculty of Engineering IFE

Żwirki 36
90-924 Łódź, POLAND

e-mail: ife@adm.p.lodz.pl
or
fax: +48 42 631-32-49

EPS

IN THE PREVIOUS YEARS THERE HAVE BEEN A VARIETY OF PROJECTS SUCCESSFULLY COMPLETED WITH THE FRAMEWORK OF EPS, AMONG OTHERS:

RESEARCH ON LIGHTWEIGHT ELECTRIC VEHICLES. DIY MODEL TESTING

GECKO CAMERA - POSSIBLE IMPLEMENTATION AND BUSINESS CASES

HOW TO FOSTER COLLABORATIVE ACTIVE LIFESTYLES AMONG YOUNGSTERS AND SENIORS?

CROWDSOURCING INNOVATIVE IDEAS

SOLVING MISCOMMUNICATIONS BETWEEN STUDENTS AND TEACHERS AT LODZ UNIVERSITY



Lodz University of Technology
International Faculty of Engineering IFE
Żwirki 36, 90-924 Łódź, POLAND
e-mail: ife@adm.p.lodz.pl
fax: +48 42 631-32-49



Lodz University of Technology

IFE.P.LODZ.PL



International Faculty
of Engineering Lodz
University of Technology

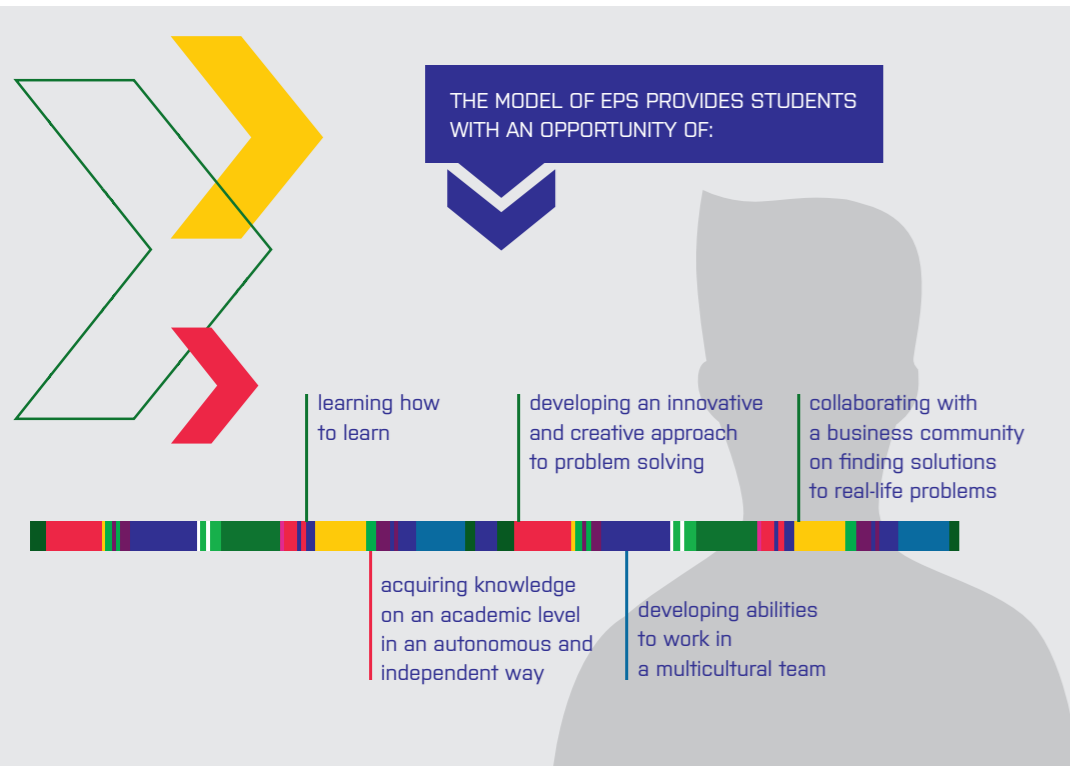
EUROPEAN PROJECT SEMESTER

EPS, an innovative semester programme, consists of a big multidisciplinary project realized in a multicultural student team, whose members represent various engineering and business programmes and communicate in English. The project is accompanied by a few intensive courses.

EPS covers the whole semester workload (30 ECTS credits) and is characterized by distinctive principles. The projects address real-life problems, technological and societal demands and changes, and are conducted in collaboration with external partners or internal university faculties.

The scheme of EPS reflects an idea of student-centred learning. Multinational teams responsible for the project realization enjoy autonomy in decision-making and are facilitated rather than supervised by university tutors. The approaches adopted by teams in the process of project realization vary from Project - Based learning, through Design Thinking, to Problem - Based Learning.

European Project Semester is offered both in spring and autumn semesters.



THE MODEL OF EPS

The competences acquired during European Project Semester are verified based on a completed project presented in the form of a manuscript report and a variety of modern presentation schemes, such as poster presentation, Pecha Kucha or speed-geeking presentations.

An element of self and peer evaluation is applied to reflect individual contributions to project work.

EUROPEAN PROJECT SEMESTER INCLUDES

European Project Semester includes a multidisciplinary project and a few intensive courses:

| | |
|--|---------|
| Project | 20 ECTS |
| Innovation for Projects | 2 ECTS |
| Team Building and Communication for Projects | 4 ECTS |

The course integrates team building and English language communication skills for effective project work.

| | |
|-----------------------------|--------|
| Project Management | 2 ECTS |
| Polish Language and Culture | 2 ECTS |

THE MOST IMPORTANT DATES

The most important dates for the spring semester:

- from the end of February till the end of June
deadline for application: 30 November

and autumn semester:

- from the end of September/beginning of October to mid-February
deadline for application: 15 July

Please note that the above dates of duration of semesters are just the indication and may vary from year to year.

THE EPS PROGRAMME

The EPS Programme is designed for students with two-year completed studies at a technical university which is either a partner of an Erasmus programme or offers Bachelor or Masters of Science Degrees.

STUDENTS' VOICE

IFE offers a chance to participate in the European Project Semester, which is a very good way to develop skills needed in individual as well as group work. In my opinion, this project constitutes a very useful bridge between the student and professional environments.

Jean-Stanislas Russocki (ENSAM)

EPS is a great opportunity to work in a close team with like minded people from all over Europe. There is a wide range of interesting projects available and you can be sure you will learn something useful. EPS will look great in your CV, especially if you plan to work abroad after graduating. The department is really helpful and the social life among EPS participants is great.

Sean McManus (University of Strathclyde)

